



Guru Gobind Singh College of Engineering & Research Centre, Nashik

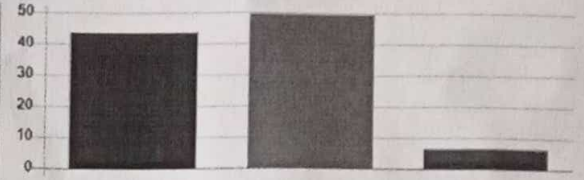
Feedback Analysis

Title : 2023-04-CE-Parents feedback

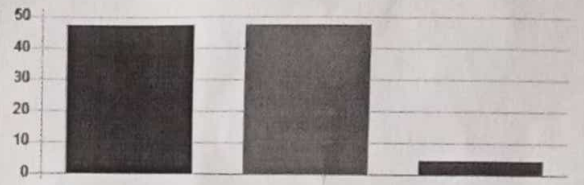
Academic Year : 2022-23

Total number of response(s) : 105

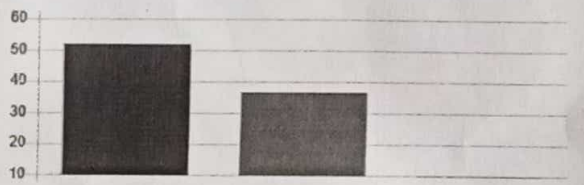
Question	Response & Communication with the college. महाविद्यालयपाशी प्रतिसाद आणि संवाद.			
Answer	Value	No. of response(s)	Response value	Response %
High	3	46	138	43.81
Moderate	2	52	104	49.52
Low	1	7	7	6.67
Performance				79.05



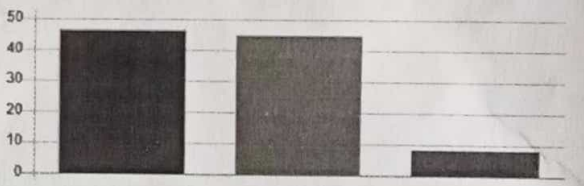
Question	Parental Pride & Respect for the college. महाविद्यालयबाबत पालकांचा अभिमान आणि आदर.			
Answer	Value	No. of response(s)	Response value	Response %
High	3	50	150	47.62
Moderate	2	50	100	47.62
Low	1	5	5	4.76
Performance				80.95



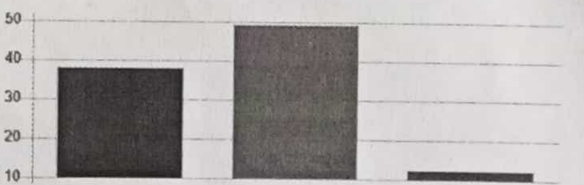
Question	Discipline Practices. शिस्तीचे आचरण.			
Answer	Value	No. of response(s)	Response value	Response %
High	3	55	165	52.38
Moderate	2	39	78	37.14
Low	1	11	11	10.48
Performance				80.63



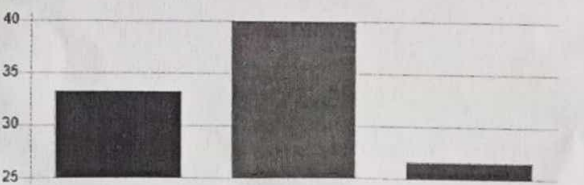
Question	Institutional sensitivity to changing educational, social and market demands(Courses, Personality Development Programs, Career Oriented Programs, Entrepreneur Development Programs etc.) बदलत्या शैक्षणिक, सामाजिक आणि बाजारतील मागण्यांसाठी संस्थात्मक संवेदनशीलता (कोर्सेस, व्यक्तिमत्त्व विकास कार्यक्रम, करिअर ओरिएंटेड प्रोग्राम्स, उद्योजक विकास कार्यक्रम इ.).			
Answer	Value	No. of response(s)	Response value	Response %
High	3	49	147	48.67
Moderate	2	47	94	44.76
Low	1	9	9	8.57
Performance				79.37



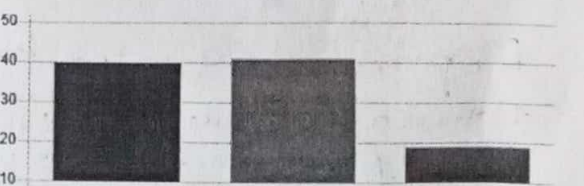
Question	Enhancement of Student's Personality. विद्यार्थ्यांचे व्यक्तिमत्त्व वाढवणे.			
Answer	Value	No. of response(s)	Response value	Response %
High	3	40	120	38.10
Moderate	2	52	104	49.52
Low	1	13	13	12.38
Performance				75.24



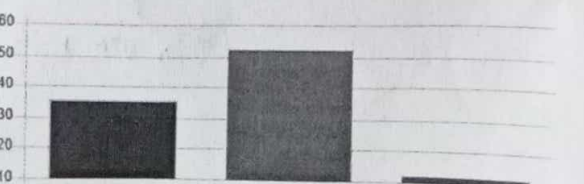
Question	Support Services like Canteen, Yoga Center, Career Counseling Cell etc. कॅन्टीन, योगा सेंटर, करिअर समुपदेशन सेल इत्यादी सहाय्य सेवा.			
Answer	Value	No. of response(s)	Response value	Response %
High	3	35	105	33.33
Moderate	2	42	84	40.00
Low	1	28	28	26.67
Performance				68.89



Question	Learning Resources such as Library, Internet & Computers etc. लायब्ररी, इंटरनेट आणि संगणक इत्यादी शिकण्याची संसाधने.			
Answer	Value	No. of response(s)	Response value	Response %
High	3	42	126	40.00
Moderate	2	43	86	40.95
Low	1	20	20	19.05
Performance				73.65

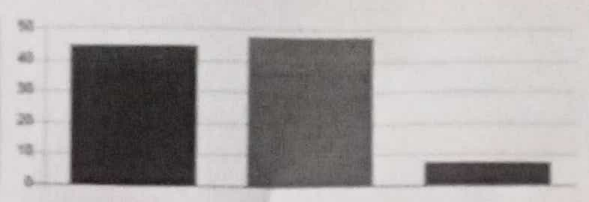


Question	Information to Facilities, सुविधांची माहिती.			
Answer	Value	No. of response(s)	Response value	Response %
High	3	37	111	35.24
Moderate	2	55	110	52.38
Low	1	13	13	12.38
Performance				74.29

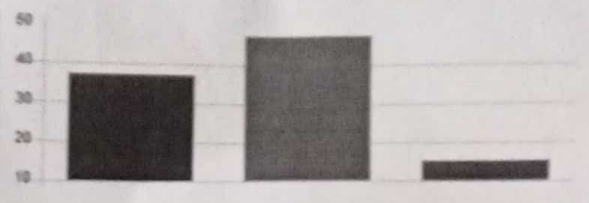


CAC Cell
 Ret. 22/04/2023
 2023

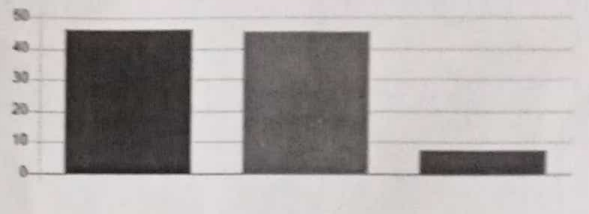
Question	Provision of self study & attitude of research orientation. स्वअध्ययन आणि संशोधन अभिरुचीकोष्य पूर्णतः उपलब्ध			
Answer	Value	No. of response(s)	Response value	Response %
High	3	47	141	44.76
Moderate	2	50	100	47.62
Low	1	8	8	7.62
Performance				79.95



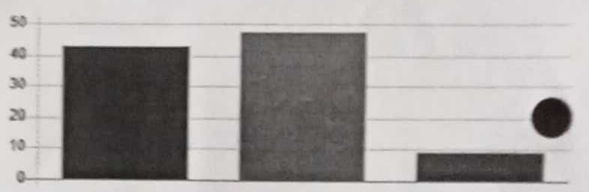
Question	Response to Community Need & Extension Program. समुदायवाच्य परियोजना प्रयोज्य			
Answer	Value	No. of response(s)	Response value	Response %
High	3	36	117	37.14
Moderate	2	50	100	47.62
Low	1	18	18	15.24
Performance				73.97



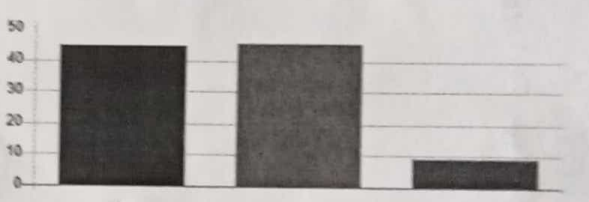
Question	Encouragement provided to students for participation in academic forum. विद्यार्थ्यांचा शैक्षणिक मंचात सहभागी होण्यासाठी प्रोत्साहन दिले जाते.			
Answer	Value	No. of response(s)	Response value	Response %
High	3	40	147	46.67
Moderate	2	48	96	45.71
Low	1	8	8	7.62
Performance				79.68



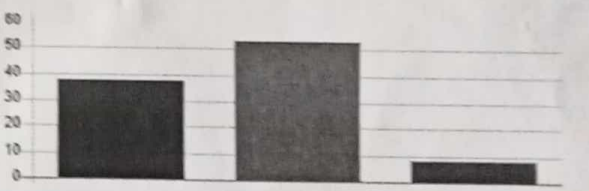
Question	Competence and Commitment of the Faculty. प्राध्यापकांची क्षमता आणि इतकबद्धता.			
Answer	Value	No. of response(s)	Response value	Response %
High	3	45	135	42.85
Moderate	2	50	100	47.62
Low	1	10	10	9.52
Performance				77.78



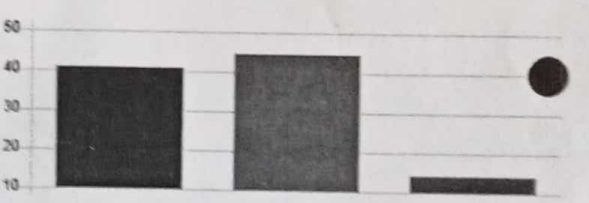
Question	System of Monitoring Student's Progress. विद्यार्थ्यांचा प्रगतीचे निरीक्षण करण्याची प्रणाली.			
Answer	Value	No. of response(s)	Response value	Response %
High	3	47	141	44.76
Moderate	2	48	96	45.71
Low	1	10	10	9.52
Performance				78.41



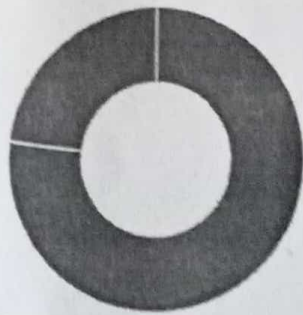
Question	Teaching- Learning Environment. अभ्यास-शिकण्याचे वातावरण.			
Answer	Value	No. of response(s)	Response value	Response %
High	3	40	120	38.10
Moderate	2	56	112	53.33
Low	1	8	9	8.57
Performance				76.51



Question	Provision of Career Oriented Programs. करिअर ओरिएंटेड कार्यक्रमांची तरतूद.			
Answer	Value	No. of response(s)	Response value	Response %
High	3	43	129	40.95
Moderate	2	47	94	44.76
Low	1	15	15	14.29
Performance				75.56



Legend: Achieved Scope for Improvement



Responses show satisfactory. However Community Extension activity will be taken up with more activities

Dr. V.M. Narkar

Actions Taken

Enter actions taken for this feedback.